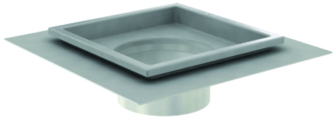
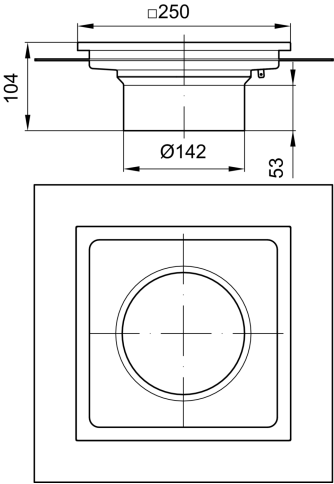


# Gully tops for ACO hygienic gully 157 - telescopic

## Product information

### ACO Product benefits

- Fully inspectable and cleanable
  - Internal radii equal or larger than 3 mm
  - Fully welded hygienic joints
  - Steel thickness min. 1,5 mm
  - Edge infill
  - ACO protective cover available
  - Fully pickled and passivated
- 
- BIM models are available in ACO Building Drainage BIM Revit libraries
  - Hygienic design following EN 1672, EN ISO 14159 and EHEDG document 8, 13 and 44
  - Certified according to EN 1253-1
  - Available in 1.4301 (304) or 1.4404 (316L) grades of stainless steel
  - Adjustable EasyFix levelling feet
  - Silt basket available as accessory



## Item Technical Data 408255

Description	Height [mm]	Version
Extended edge	30	1.4404